
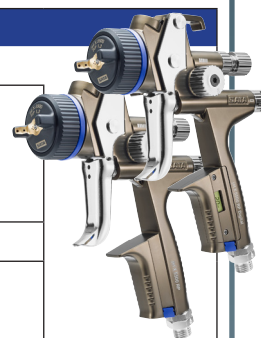


SATAjet® X 5500 RP®/HVLP




SATAjet® X 5500 RP® STANDARD / DIGITAL

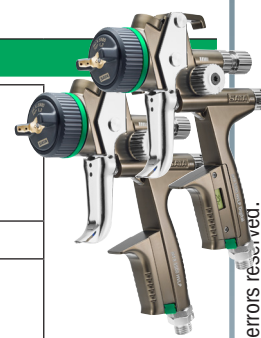
Technical Data  www.sata.com/SATAjetX5500	Inlet pressure
	Field of application: 0.5 bar - 2.4 bar Compliant: max. 2.0 bar
	Air consumption at 2.0 bar: 290 NI/min
	Spray distance Field of application: 10 cm - 21 cm Recommended: 17 cm - 21 cm



Nozzle	I-nozzle					O-nozzle				
	1.1 l	1.2 l	1.3 l	1.4 l	-	1.1 0	1.2 0	1.3 0	1.4 0	-
Standard with RPS multi-purpose cup 0.6 l / 0.9 l (each 1x) with swivel joint										
Art. No.	1061548	1061556	1061564	1061572	-	1061580	1061598	1061605	1061613	-
DIGITAL with RPS multi-purpose cup 0.6 l / 0.9 l (each 1x) with swivel joint										
Art. No.	1061621	1061647	1061697	1061712	-	1061746	1061788	1061803	1061829	-
Nozzle	1.1 l	1.2 l	1.3 l	1.4 l	-	1.1 0	1.2 0	1.3 0	1.4 0	-
Nozzle set										
Art. No.	1063536	1063544	1063552	1063560	-	1063578	1063586	1063594	1063601	-

SATAjet® X 5500 HVLP STANDARD / DIGITAL

Technical Data  www.sata.com/SATAjetX5500	Inlet pressure
	Field of application: 0.5 bar - 2.4 bar HVLP: max. 2.0 bar
	Air consumption at 2.0 bar: 430 NI/min
	Spray distance Field of application: 10 cm - 21 cm Recommended: 10 cm - 15 cm

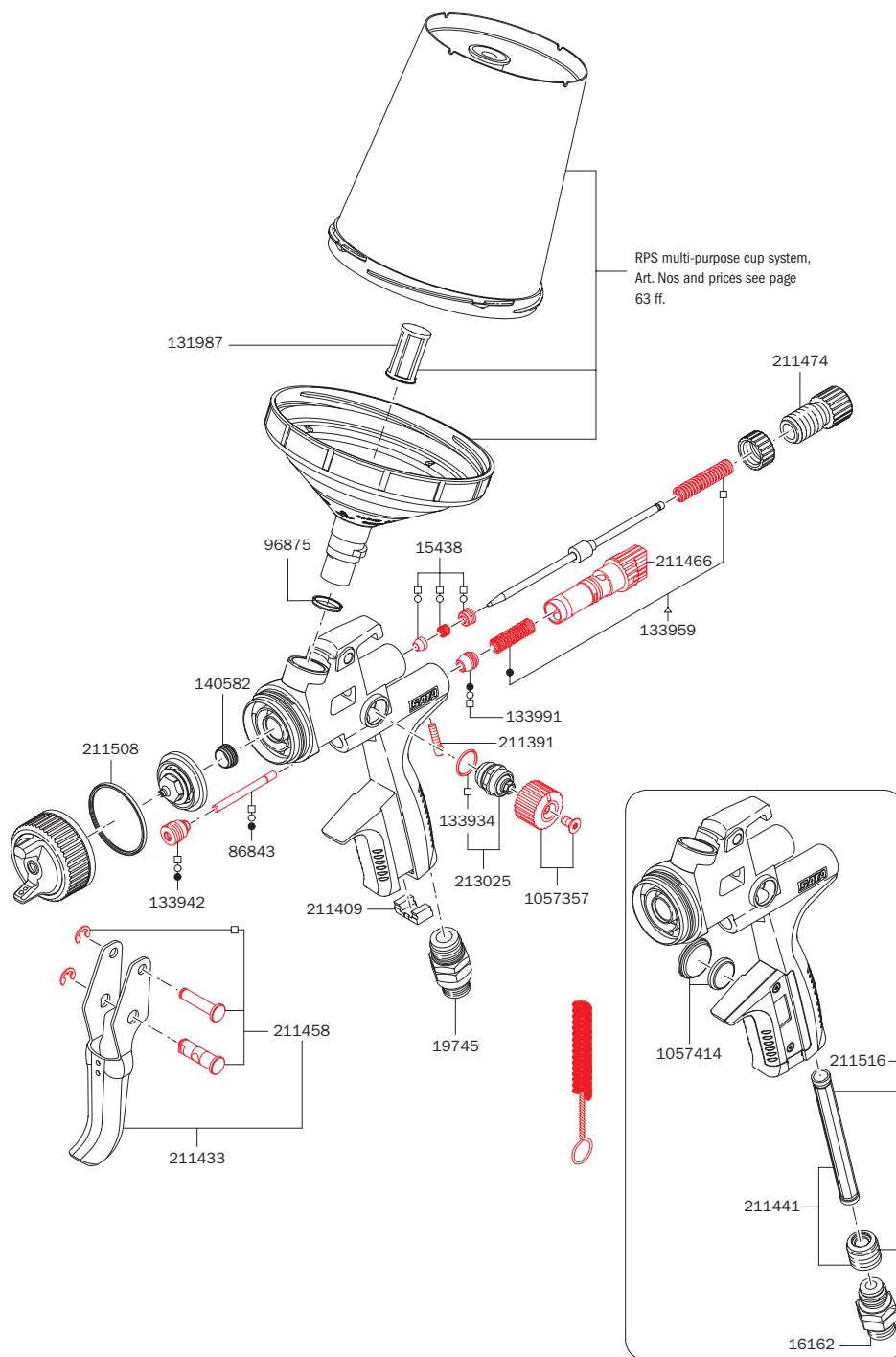


Nozzle	I-nozzle					O-nozzle				
	1.1 l	1.2 l	1.3 l	1.4 l	1.5 l	1.1 0	1.2 0	1.3 0	1.4 0	1.5 0
Standard with RPS multi-purpose cup 0.6 l / 0.9 l (each 1x) with swivel joint										
Art. No.	1061895	1061902	1061887	1061910	1061928	1061936	1061944	1061952	1061960	1061978
DIGITAL with RPS multi-purpose cup 0.6 l / 0.9 l (each 1x) with swivel joint										
Art. No.	1061994	1061879	1062025	1062033	1062067	1062075	1062108	1062124	1062158	1062166
Nozzle	1,1 l	1,2 l	1,3 l	1,4 l	1,5 l	1,1 0	1,2 0	1,3 0	1,4 0	1,5 0
Nozzle set										
Art. No.	1063619	1063627	1063635	1063651	1063669	1063677	1063685	1063643	1063693	1063700

All prices are recommended list prices. Errors, technical modifications and printing errors reserved.

Spare Parts SATAjet® X 5500

Art. No./Descr.
15438 Paint needle packing
16162 Swivel joint
19745 Swivel joint
86843 Air piston rod
96875 PVC insert for paint spray guns with QCC cup connection
131979 Spare flat sieve 125µm, pastel blue (packing unit 100 pieces)
131987 Spare plug-in sieve 200 µm, pastel green (packing unit 100 pieces)
133934 Sealing (packing unit 3 pieces) for spindle
133942 Seal retainer, cpl.
133959 Pressure spring (3 pieces) for paint needle and air piston
133991 Air piston head (packing unit 3 pieces)
140582 Sealing element (packing unit 5 pieces) for fluid tip
211391 Locking screw (packing unit 3 pieces) for air micrometer
211409 CCS-Clips, green, blue, red, black (packing unit 4 pieces)
211433 Trigger kit
211441 Seal retainer with sleeve
211458 Trigger sleeve kit
211466 Air micrometer
211474 Material flow control with counter nut
211508 Sealing ring (packing unit 5 pieces)
211516 Swivel joint with seal retainer and sleeve
213025 Spindle, cpl., for round / flat spray control
1057323 Tool kit
1057357 Control knob with screw (packing unit 2 pieces)
1057414 Battery kit



All prices are recommended list prices. Errors, technical modifications and printing errors reserved.

Art. No./Descr.
1057323 Tool kit
· Universal spanner
· Combi tool
· Cleaning brush
· CCS clips
· Paint strainer

Art. No./Descr.
1047522 Repair kit
82552 Air piston service unit
○ 136960 Sealing kit